

Proxy Settings and Firewall Information

Launching vClass

The vClass virtual classroom is launched by Java Web Start when a user clicks on a link in an internet browser window or email. Clicking on the link downloads a small JNLP file containing the IP address and port number for the associated vClass server, and instructions for Java Web Start to connect to it.

Connecting to a Classroom

Java Web Start attempts a direct connection to the vClass server. Unfortunately, many firewalls prevent outbound connections on most ports. Many proxy-based firewalls prevent any direct TCP/IP connections. vClass addresses these issues in a number of ways.

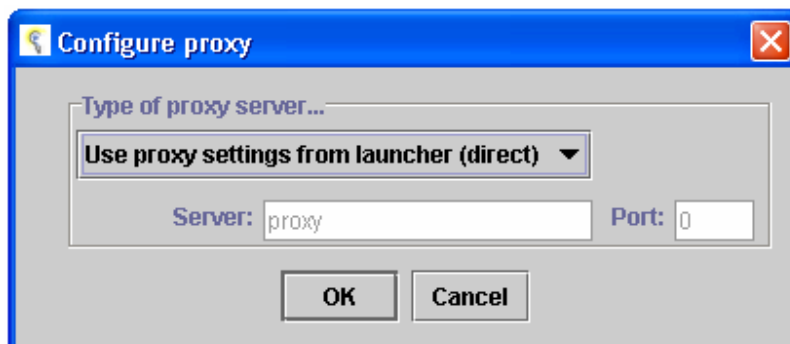
vClass attempts to connect on multiple ports simultaneously. vClass first attempts a direct connection to ports 2187 and 80. If such a connection is not possible, vClass attempts an indirect connection using HTTPS on port 443. If such attempts fail, vClass reports to the user that

- The connection failed, or
- The connection was reset by peer, or
- The connection timed out.

Proxy Configuration Settings

You may also use the Proxy Configuration settings on the Tools menu of vClass to specify the type of connection vClass should use. There are four proxy configuration options:

- Use proxy settings from launcher (direct)
- Direct communication
- Use HTTPS proxy server
- Use SOCKS V4 proxy server.

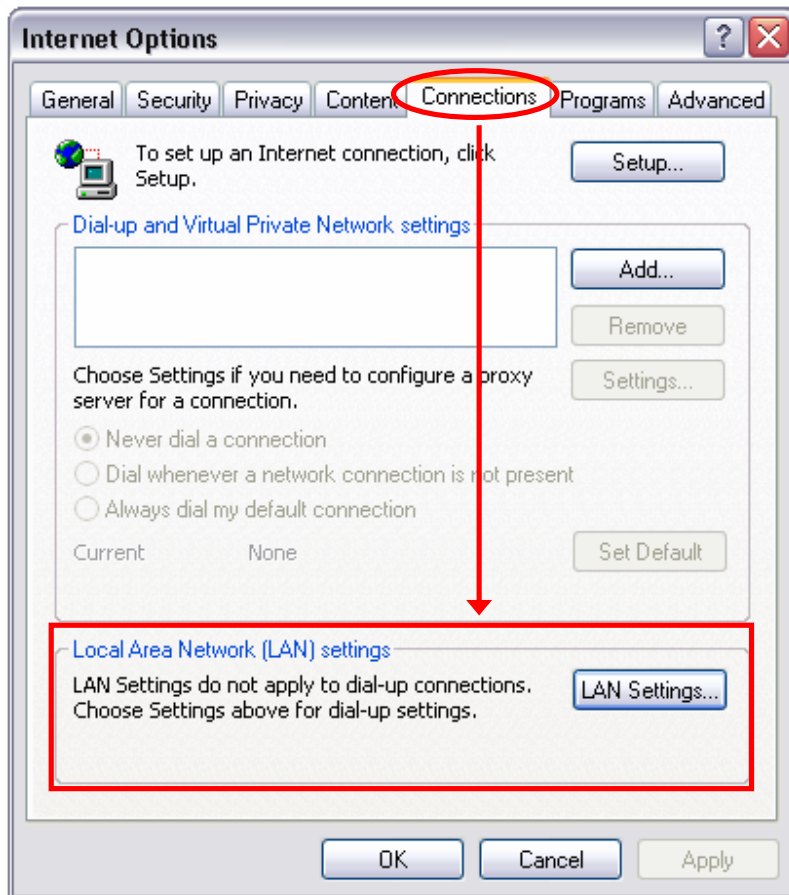


Configuring an HTTPS Proxy

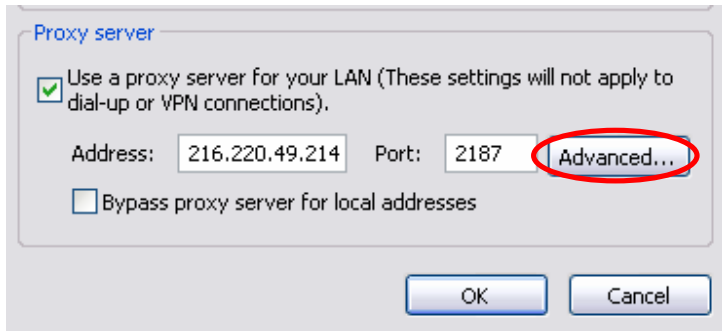
To configure vClass to work with an HTTPS proxy, determine the IP address and port number of the proxy and transfer them into vClass's Configure Proxy tool.

Determining HTTPS Proxy Settings

To determine HTTPS proxy settings, open Internet Explorer, and select Internet Options from the Tools menu. Select the Connections tab and select LAN Settings.



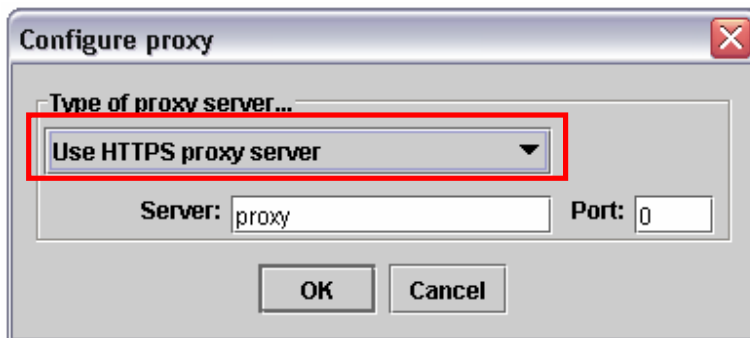
On the Local Area Network (LAN) Settings panel, select Advanced.



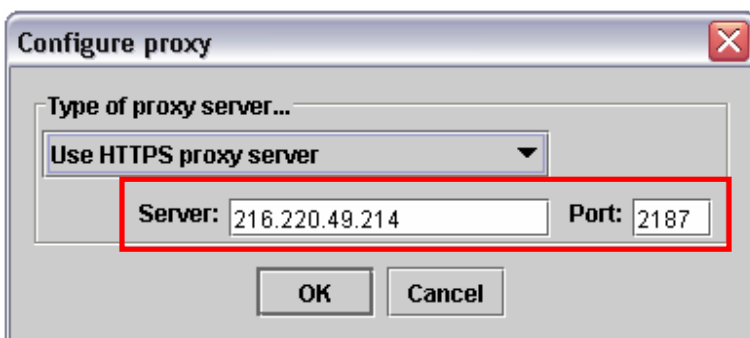
Record the IP Address and Port Number listed beside Secure.

vClass's Configure Proxy Tool

In the vClass Virtual Classroom, select Configure Proxy from the Tools menu. From the pull-down menu, select Use HTTPS proxy server.



Beside Server, enter the IP Address of the proxy server. Beside Port, enter the Port Number. Click OK.



Connect to the classroom by choosing Join a Class from the File menu.