



lluminate Firewall Guide

The Elluminate *Live!* environment is launched by Java Web Start when a user clicks on a link in an Internet browser window or email. Clicking on the link downloads a small JNLP file containing the IP address and port number for the associated Elluminate *Live!* server and instructions for Java Web Start to connect to it.

Addresses, Ports and Protocols

If a user is attempting connection to a session running on Elluminate's servers, it will be made to el01.lluminate.com (216.220.49.212) on one of two ports – 2187 or 80 – in a proprietary protocol known as Jinx.

Session Type	Protocol	Transport Protocol	Network Address	Target Port	Action
Live	JINX	TCP	216.220.49.212	2187	Allow
Live (Alternate)	JINX	TCP	216.220.49.212	80	Allow
Recording	JINX	TCP	216.220.49.212	80	Allow

Implications

- Only authorized clients may connect to the Elluminate *Live!* server
- The connection is always initiated from the client
- After connection, only the Elluminate *Live!* server may send data

If a user is attempting connection to a session running on a license holder's server, the network address and port number may differ. Contact the organization hosting the session for network address and port information.

Proxies and Java Web Start

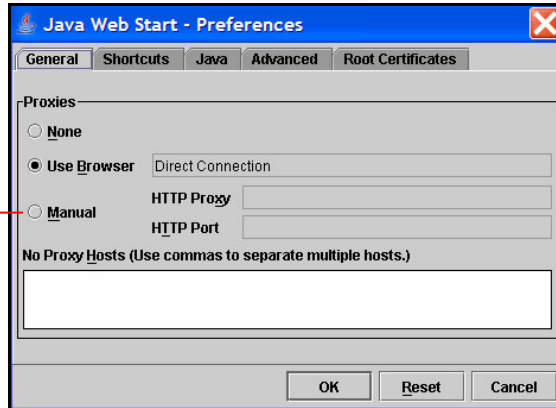
Java Web Start must be configured with the correct proxy settings in order to launch applications from outside your firewall. Java Web Start, by default, detects the proxy settings from the default browser on the connecting system. Java Web Start supports most web proxy configuration scripts and can detect proxy settings in most environments.

If Java Web Start cannot detect the proxy settings, it will prompt to specify the settings the first time it is used. Java Web Start will also prompt for username and password should it encounter an authenticating proxy.

You can also use the Java Web Start Application Manager's Preferences panel to view or edit the proxy configuration. On a Windows machine:

- Click on the **Start** button and select **Programs** (or **All Programs**)
- Select the Java Web Start folder and click on Java Web Start to open the Java Web Start **Application Manager**
- From the **File** menu, choose **Preferences**
- Click on the **General** tab and set your proxy information manually

To specify a proxy, switch to Manual and enter its information



Proxies and Elluminate Live!

If Java Web Start connects successfully but a computer cannot connect to the Elluminate *Live!* session, it is possible to configure the proxy settings for Elluminate *Live!*. Close any message indicating that connection is not possible, and in the Elluminate *Live!* interface, click select **Proxy Configuration...** from the **Tools** menu. Select the type of proxy server and adjust the settings as required. Close the interface and attempt connection again.



To specify a proxy, select its type from the pull down menu and enter its information

